

## REDUCED LEAD TIMES

Marathon is pleased to announce even shorter lead times. Marathon's new standard lead times range from five (5) to seven (7) working days on most products that are not currently stocked. Concurrent to reduction in lead times, Marathon is happy to announce availability of increased inventory of "ship from stock" products.

"Under the current economic environment, reduced lead times and availability of products on shelf are critical to our customers to help reduce costs and run their operations in an efficient manner" said Vijay Chahar, General Manager and Vice-President at Marathon Special Products.

For more information on stock availability, lead times, delivery or for pricing on any of Marathon products, please contact any of our Customer Service Representatives at (419) 352-8441 or email your inquiry to [marketing@marathonsp.com](mailto:marketing@marathonsp.com).

## SOLAR INDUSTRY MAGAZINE

Marathon has recently placed an ad in the Solar Industry Magazine to highlight PV Combiner Box and Inverter Components. Our ad was included in the February and March issues and will also be included in the upcoming June, July, September and October issues.



**MADE IN USA**

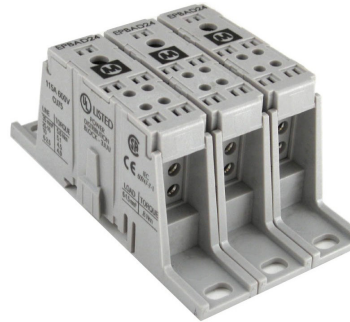
**PV Combiner Box and Inverter Components**

- ✓ Touch Proof Power Distribution Blocks Up to 600 Volt AC/DC, 510 Amps
- ✓ Enclosed Fuse Holders for use with Class M and CC 10 x 38 fuses
- ✓ Rated for use with Flexible Stranded Wire (UL 486A/B)
- ✓ CE Self-Certified with Higher Voltage Ratings

**MARATHON SPECIAL PRODUCTS**

PH: 419-352-8441 | [marketing@marathonsp.com](mailto:marketing@marathonsp.com) | [www.marathonsp.com](http://www.marathonsp.com)

## UL LISTED ENCLOSED PB



Marathon is pleased to introduce a new addition to their Enclosed Power Block line. Along with the enhanced touch-proof protection, the new Enclosed Power Blocks are UL Listed and designed to meet the new spacing requirements with elevated SCCR ratings per UL508A

and NEC2005. Features of the new Enclosed Power Blocks include a smaller profile, lower wire range approval (#2-14) and a modular design that allows snapping of any number of poles together.

The newly released Enclosed Power Blocks are compliant to UL standards for use with flexible stranded wire (Class G, H, I & K). These blocks can be used for a variety of applications including Industrial Control Panels, Solar Combiner and Inverter Panels, Wind Power, and other commercial applications.

Product literature and detailed product datasheets are available at [www.marathonsp.com](http://www.marathonsp.com).

## COMPONENTS FOR WINDPOWER INDUSTRY

Marathon's products, including fuse holders, power blocks, terminal blocks, and grounding lugs, are available for the nacelle, tower, utility and tower base.



## NOTIFICATION OF LATE SHIPMENTS

In order to be more proactive, Marathon Special Products has started to advise customers if an order did not ship on its original promise date. We will be sending an email to the customer and will advise a new ship date.